

TEMPERATURE CONTROL UNITS



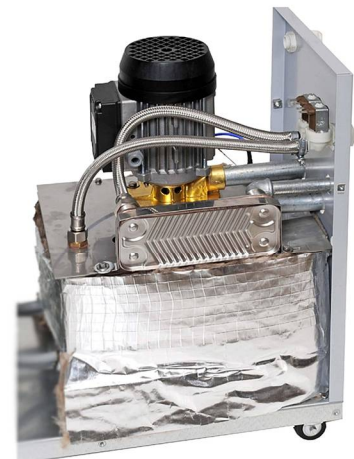
MTR SMART

TECHNICAL DATA MTR SMART :

- PID temperature control in cooling and heating process
- Serial interface 4-20mA, RS 485, 0-10 volt
- Pump works under pressure and reverse sense
- Hose rupture and leakage monitor
- Sensor failure monitor
- Tank and heaters made of stainless steel
- Indirect cooling system
- Magnetic water level sensor
- Automatic water feeding
- Castors

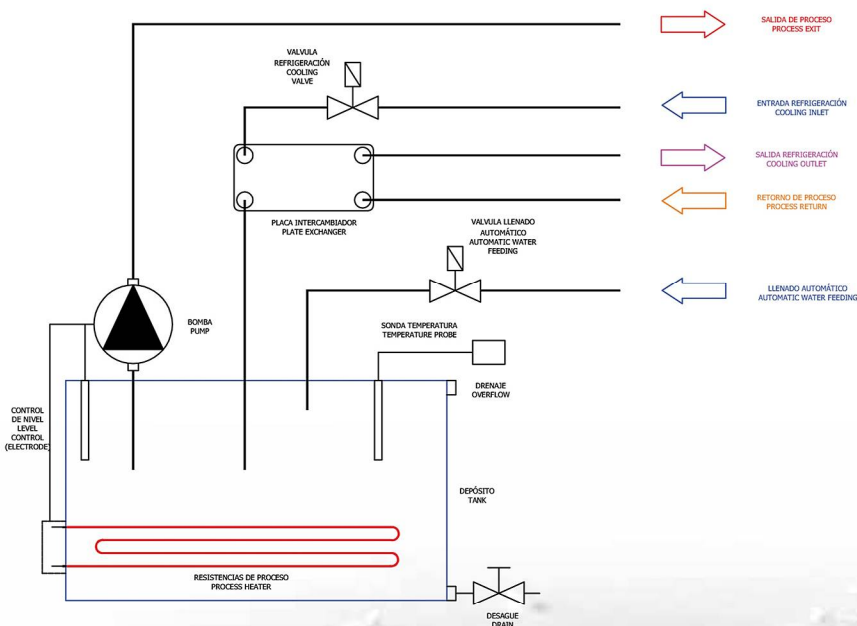
OPTIONS:

- Double water outlet kit
- Flow rate control
- 60 lit/min 5.8 bar pump
- External sensor
- PT100 process sensor
- Return of process temperature indication
- Security thermostat
- Acoustic alarm
- Solid State Relay



Water units internal view

Open Tank Water Unit Diagram



MTR SMART 2 - 4

TECHNICAL DATA MTR SMART 2 - SMART 4:

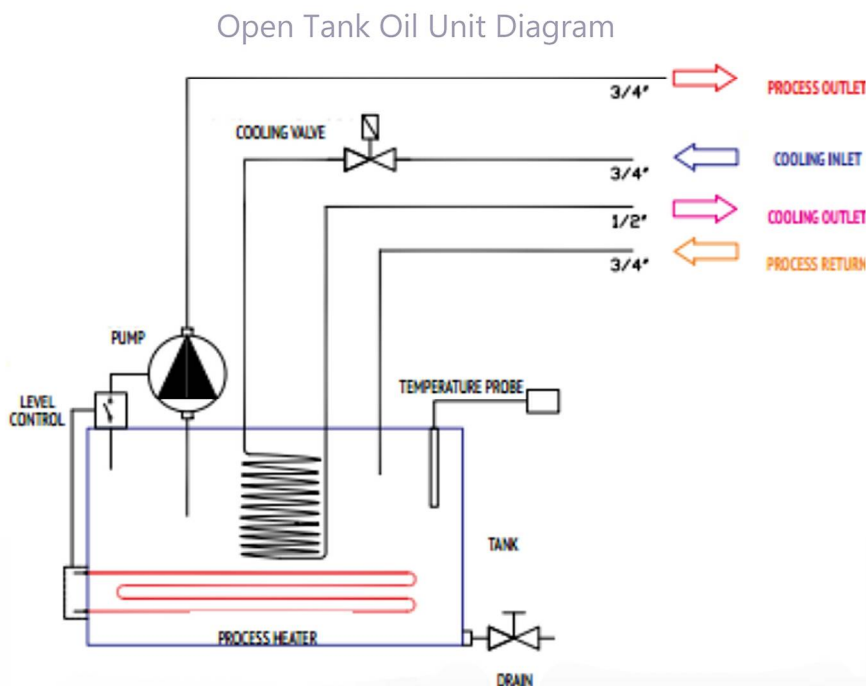
- PID temperature control in cooling and heating process
- Serial interface 4-20mA, RS 485, 0-10 volt
- Pump works under pressure and reverse sense
- Hose rupture and leakage monitor
- Sensor failure monitor
- Tank and heaters made of stainless steel
- Indirect cooling system
- Magnetic water level sensor (only water units)
- Automatic water feeding (only water units)
- Castors

OPTIONS:





- Double water outlet kit
- Flow rate control
- Different types of pumps (see table)
- External sensor
- PT100 process sensor
- Return of process temperature indication
- Security thermostat
- Acoustic alarm
- Solid State Relay







Oil units internal view



TECHNICAL DATA

MODEL		SMART	SMART 2 W	SMART 4 W	SMART 6W
Fluid		Water			
Maximum temperature	°C	90			
PID temperature control	
Heating power	3Kw
	6 Kw
	9 Kw
	12 Kw
	18 Kw
	24 Kw
	30 Kw
Cooling power	Kw	40	40	40	80
Tank capacity	lit.	12	20	35	70
Pump	Max.Flow	60 lit/min	60 lit/min	60 lit/min	200 lit/min
	Max.Pressure	3,8 bar	3,8 bar	3,8 bar	5,8 bar
	Power	0,5 kw	0,5 kw	0,5 kw	2,8 kw
Hydraulic process connections		3/4"	3/4"	3/4"	1 1/2"
		3/4"	3/4"	3/4"	1 1/2"
Hydraulic cooling connections		3/4"	3/4"	3/4"	1/2"
		1/2"	1/2"	1/2"	1/2"
Dimensions	mm	295 x 575 x 495h	295 x 575 x 585h	365 x 750 x 785h	500 x 850 x 1020h
Weight	kg	40	47	60	110
Voltage	V/Ph/Hz	400/3/50-60/PE			

MODEL		ST 2 0	ST 4 0	ST 6 0
Fluid		Oil		
Maximum temperature	°C	200 (*)	200 (*)	200 / 250 (*)
PID temperature control		.	.	.
Heating power	3Kw	.	.	.
	6 Kw	.	.	.
	9 Kw	.	.	.
	12 Kw	.	.	.
	18 Kw	.	.	.
	24 Kw	.	.	.
	30 Kw	.	.	.
Cooling power	Kw	20	40	80
Tank capacity	lit.	20	35	70
Pump	Max.Flow	60 lit/min	60 lit/min	200 lit/min
	Max.Pressure	3,8 bar	3,8 bar	5,8 bar
	Power	0,5 kw	0,5 kw	2,8 kw
Hydraulic process connections		3/4"	3/4"	1 1/2"
		3/4"	3/4"	1 1/2"
Hydraulic cooling connections		3/4"	3/4"	3/4"
		1/2"	1/2"	3/4"
Dimensions	mm	295 x 575 x 585h	365 x 750 x 785h	500 x 850 x 1020h
Weight	kg	47	60	110
Voltage	V/Ph/Hz	400/3/50-60/PE		

(*) Smart 2 & Smart 4 optional pump, standard pump 150°C

(*) Smart 6 optional pump, standard pump 200°C



Labotek A/S

Stroebjergvej 29, DK-3600 Frederikssund
Denmark.
www.labotek.com

Labotek Plastics Auxiliaries (India) Pvt Ltd

Survey No. 78/1, A/P, Shivane,
Near Shiv Kamal Industrial Area, Tal. : Haveli,
Dist. : Pune - 411023, India.
Tel. : +91 80 55 428275
Email : marketing@labotek.co.in, sales2@labotek.co.in,
www.labotek.co.in