

TEMPERATURE CONTROL UNITS



MTR SMART 2 - 4 WDC

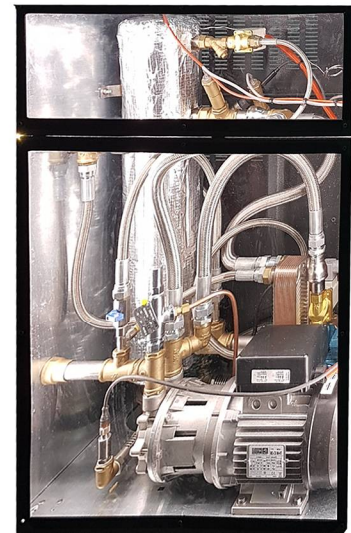
TECHNICAL DATA

MTR SMART 2 WDC – SMART 4 WDC:

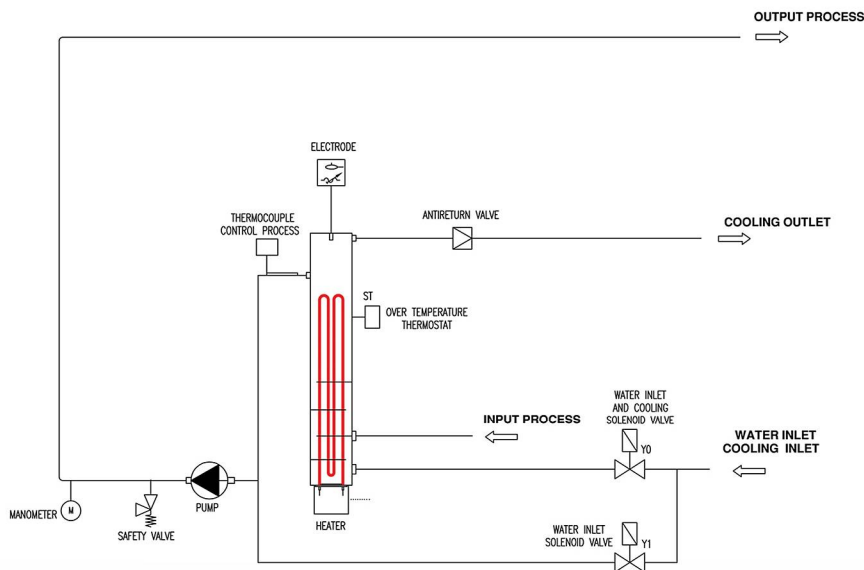
- PID temperature control in cooling and heating process
- Serial interface 4-20mA, RS 485, 0-10 volt
- Sensor failure monitor
- Hose rupture and leakage monitor
- Heating cylinder and heater made of stainless steel
- Direct cooling system
- Security thermostat
- Automatic water feeding
- Castors

OPTIONS:

- Flow rate control
- External sensor
- PT100 process sensor
- Return of process temperature indication
- Acoustic alarm
- Solid State Relay



Open Tank Water Unit Diagram



Internal view

MTR SMART 2 - 4 WIC

TECHNICAL DATA MTR SMART 2 WIC - SMART 4 WIC:

- PID temperature control in cooling and heating process
- Serial interface 4-20mA, RS 485, 0-10 volt
- Hose rupture and leakage monitor
- Sensor failure monitor
- Heating cylinder and heater made of stainless steel
- Magnetic pump
- Indirect cooling system
- Magnetic water level sensor
- Automatic water feeding
- Security thermostat
- Castors

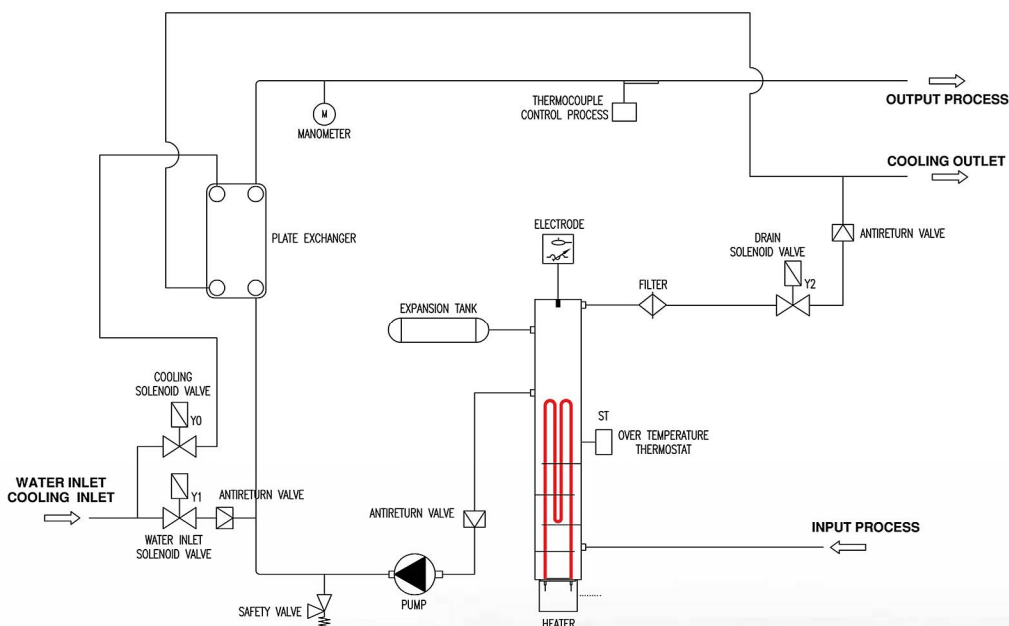
OPTIONS:

- Flow rate control
- Different types of pumps (see table)
- External sensor
- PT100 process sensor
- Return of process temperature indication
- Acoustic alarm
- Solid State Relay











Internal view

Open Tank Water Unit Diagram



TECHNICAL DATA

MODEL		MC HEAT	ST 2 WDC	ST 4 WDC
Fluid		Water		
Maximum temperature	°C	140	90	
PID temperature control		•	•	•
Heating power	6 Kw	•	•	•
	9 Kw		•	•
	18 Kw			•
Cooling power	Kw	Direct cooling system		
Pump	Max.Flow	110 lit/min	70 lit/min	200 lit/min
	Max.Pressure	1,8 bar	2,2 bar	2,5 bar
	Power	0,45 kw	0,37 kw	0,75 kw
Hydraulic process connections		3/4"	1"	1"
		3/4"	1"	1"
Hydraulic cooling connections		1/2"	3/4"	3/4"
		1/2"	3/4"	3/4"
Dimensions	mm	215 x 640 x 320h	295 x 575 x 585h	365 x 750 x 785h
Weight	kg	25	45	55
Voltage	V/Ph/Hz	400/3/50-60/PE		

MODEL		ST 2 WIC	ST 4 WIC	ST 2 WIC	ST 4 WIC
Fluid		Water			
Maximum temperature	°C	140		150	160
PID temperature control			•	•	•
Heating power	6 Kw	•		•	
	9 Kw		•	•	•
	18 Kw			•	•
Cooling power	Kw	40	40	40	40
Pump	Max.Flow	40 lit/min	40 lit/min	40 lit/min	40 lit/min
	Max.Pressure	5 bar	5 bar	5 bar	5 bar
	Power	0,5 kw	0,5 kw	0,5 kw	1 kw
Hydraulic process connections		1"	1"	1"	1"
		1"	1"	1"	1"
Hydraulic cooling connections		3/4"	3/4"	3/4"	3/4"
		3/4"	3/4"	3/4"	3/4"
Dimensions	mm	295 x 575 x 585h	365 x 750 x 785h	295 x 575 x 585h	365 x 750 x 785h
Weight	kg	47	60	47	75
Voltage	V/Ph/Hz	400/3/50-60/PE			



Labotek A/S

Stroebjergvej 29, DK-3600 Frederikssund
Denmark.
www.labotek.com

Labotek Plastics Auxiliaries (India) Pvt Ltd

Survey No. 78/1, A/P, Shivane,
Near Shiv Kamal Industrial Area, Tal. : Haveli,
Dist. : Pune - 411023, India.
Tel. : +91 80 55 428275
Email : marketing@labotek.co.in, sales2@labotek.co.in,
www.labotek.co.in