

Labo-Scan

Touch Screen Control for
Materials Handling Systems



Labo-Scan

Introduction

The Labo-Scan series takes full control of materials handling requirements.

A user-friendly interface via 6" touch screen enables automatic control of conveying of raw materials up to 32 stations.

The control system is supplied in wall mounted cabinet and enables great visual appearance of the features. The control is able to handle our energy saving frequency controlled vacuum station as standard.

The Labo-Scan Series offers...

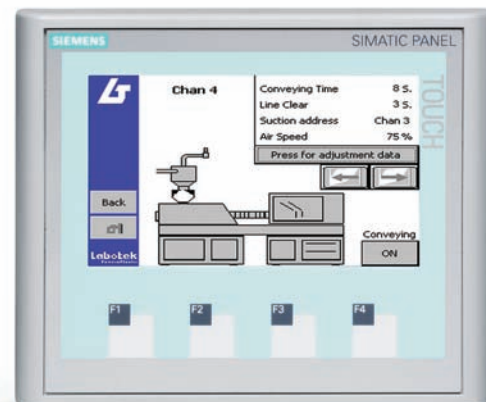
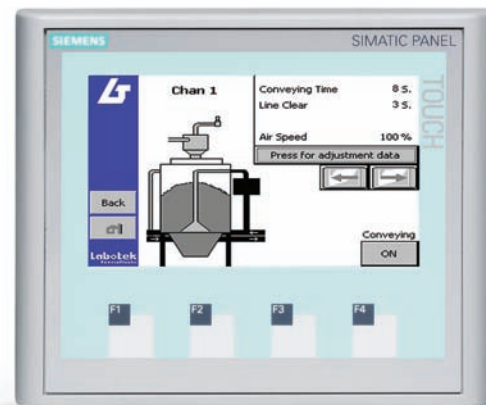
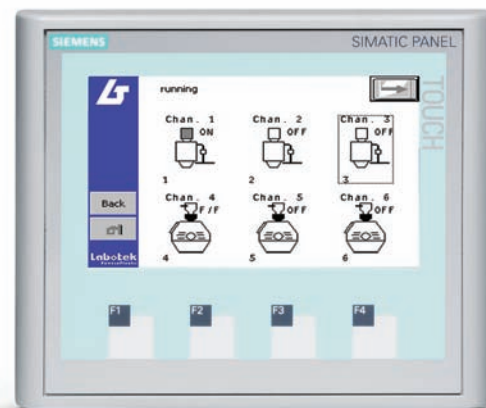
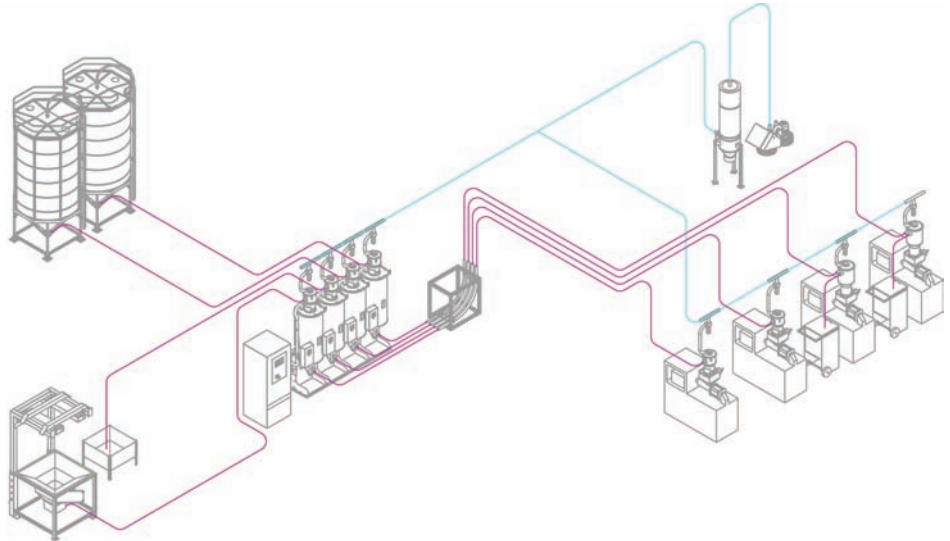
- Significant energy savings via frequency controlled blower
- 6" Touch Screen & PLC from Siemens
- Flexible setup for great visual appearance
- Full control of all parameters for each station
- Ease of use, no need for special training
- Personalized descriptive texts and plain alarm texts
- Comprehensive 3 year warranty

Labo-Scan features

The user-friendly interface, allows for graphic appearance as either a production machine, drying hopper or no show. The result is visualization that matches the actual appearance, making operation of the Labo-Scan control extremely easy.

Suction time, line clearing time, suction address and air speed frequency is adjusted direct on screen, either via keyboard pad or drop down boxes. Operator can scroll between station selection as required. The Labo-Scan control has build-in control of suction address, where a pneumatic slide valve under a drying hopper is operated, securing a safe and self cleaning conveying cycle, leaving no dried material residue after a conveying cycle.

The frequency controller is set in % air speed; herewith each station may have its individual air speed setting, depending on material being conveyed. Huge energy savings may be obtained through our series of frequency inverters. Raw materials are gently conveyed and hardware piping systems/hoses has increased lifespan.



Technical Data

Part no.	Description	No. of stations	No. of slide valves	Frequency control
101373	Labo-Scan 16	16	-	-
101374	Labo-Scan 16-INV	16	-	Yes
101375	Labo-Scan 16/7	16	7	-
101376	Labo-Scan 16/7-INV	16	7	Yes
101377	Labo-Scan 32	32	-	-
101378	Labo-Scan 32-INV	32	-	Yes
101379	Labo-Scan 28/7	28	7	-
101380	Labo-Scan 28/7-INV	28	7	Yes

Dimensions

Description	Dimensions
Labo-Scan 16 to Labo-Scan 16/7-INV	L 500 x W 500 x D 250 mm
Labo-Scan 28/7 to Labo-Scan 32-INV	L 600 x W 600 x D 250 mm

All measurements are in mm.

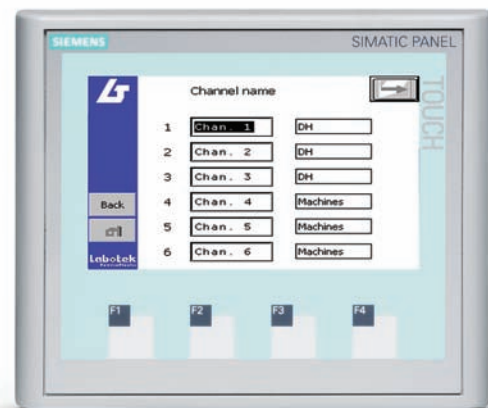
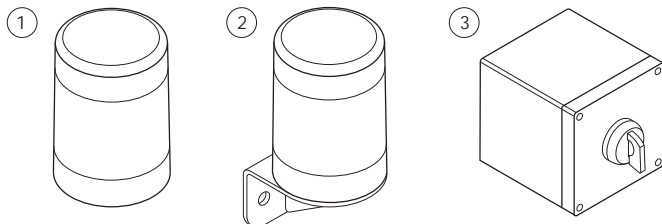
The vacuum station set up menu is prepared for several filter cleaning options, such as dust cyclone, self purifying filter or Blow Back Valve.

Furthermore the stand by frequency may be selected leaving vacuum station running at ie 10 Hz while waiting for next station to call for material.

Options

The Labo-Scan controls are prepared for a number of options:

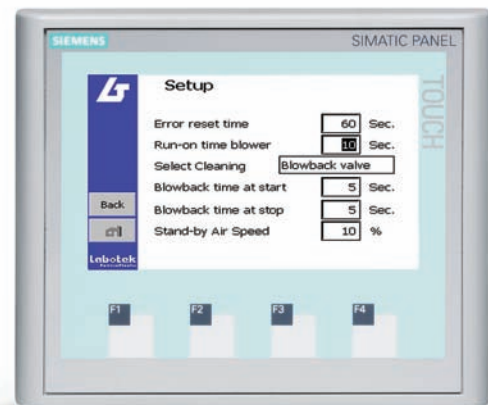
Pos.	Description	LT no.
1	Warning lamp 24 V AC (fitted on top of control)	202041
2	Warning lamp 24 V AC (with 10 m cable for remote location)	203578
3	Local On/Off at production machine	204898



Personalized description for each station



Full alarm list and alarm status definition





Labotek A/S
Stroebjergvej 29
DK-3600 Frederikssund

Representative

+45 4821 8411
info@labotek.dk
www.labotek.com