

20 JM

SERIE

FEATURES	32-20	42-20
Motor power (kW) 400V	3	4
Feeding opening (mm)	320 x 200	420 x 200
Knives/counterknives N°	3/2	3/2
Rotor diameter (mm)	180	180
Standard screen (mm)	5	5
Indicative output (kg/h)	40-60	50-80
Rotor speed (rpm)	315	315
Weight (kg)	320	380
Knives and screen in antiwear execution	o	o
Soundproof rigid flap	o	o
Traction groups	x	o
Conveyor for manipulator	o	o
Hopper for pipes and sheets	x	o
Not soundproof execution	o	o
Hopper for edge trims	x	o
Level control	o	o
Discharge for hopper loader	o	o
Discharge with auger screw	o	o
EC extractor with storage	o	o
Discharge with suction group on board	o	o
Discharge with suction group on floor	o	o

o = optional x = not available

TYPE	A	B	C	D	E
32-20 JM	680	470	320	390	310
42-20 JM	780	570	420	490	410



Visit our test room in Cologno Monzese.
Over than 15 granulators ready for your test.

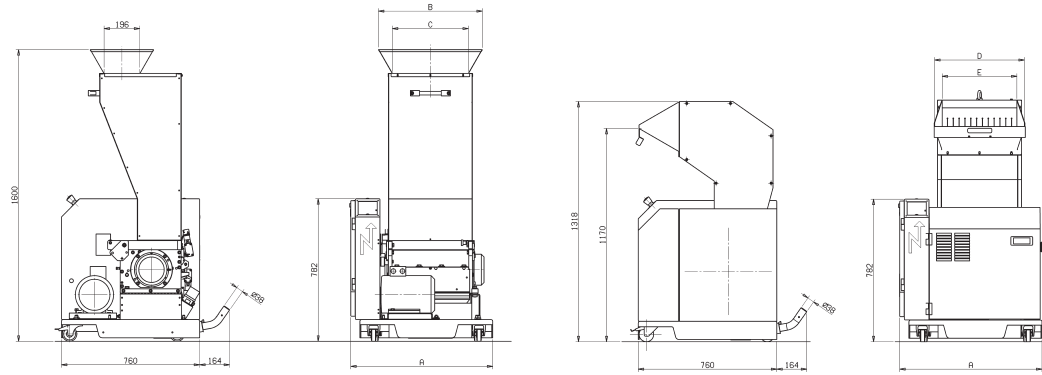
info@giannirusconi.it

20 JM

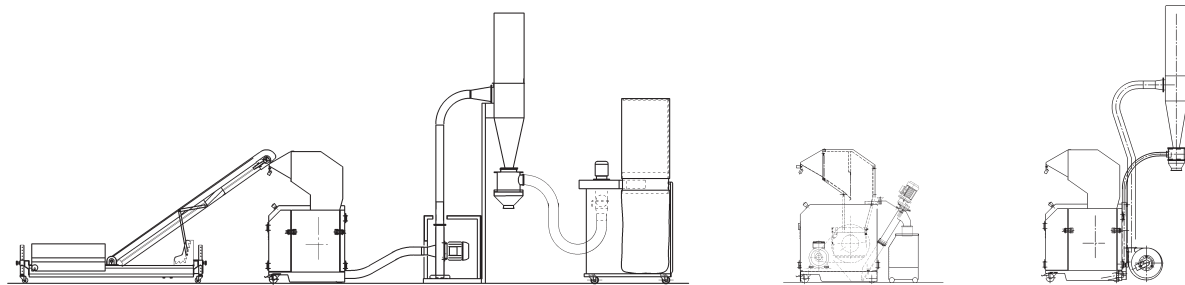


© TRIA S.p.A. - ED 09.2013

SERIE



ACCESSORIES conveyor belt/depowdering system auger screw suction group



Your recycling needs. Our grinding solutions.

TRIA Italy
www.triaplastics.com

TRIA America
TRIA Brazil

TRIA China
TRIA Germany

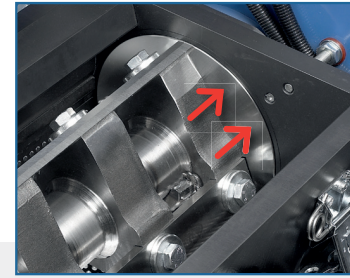
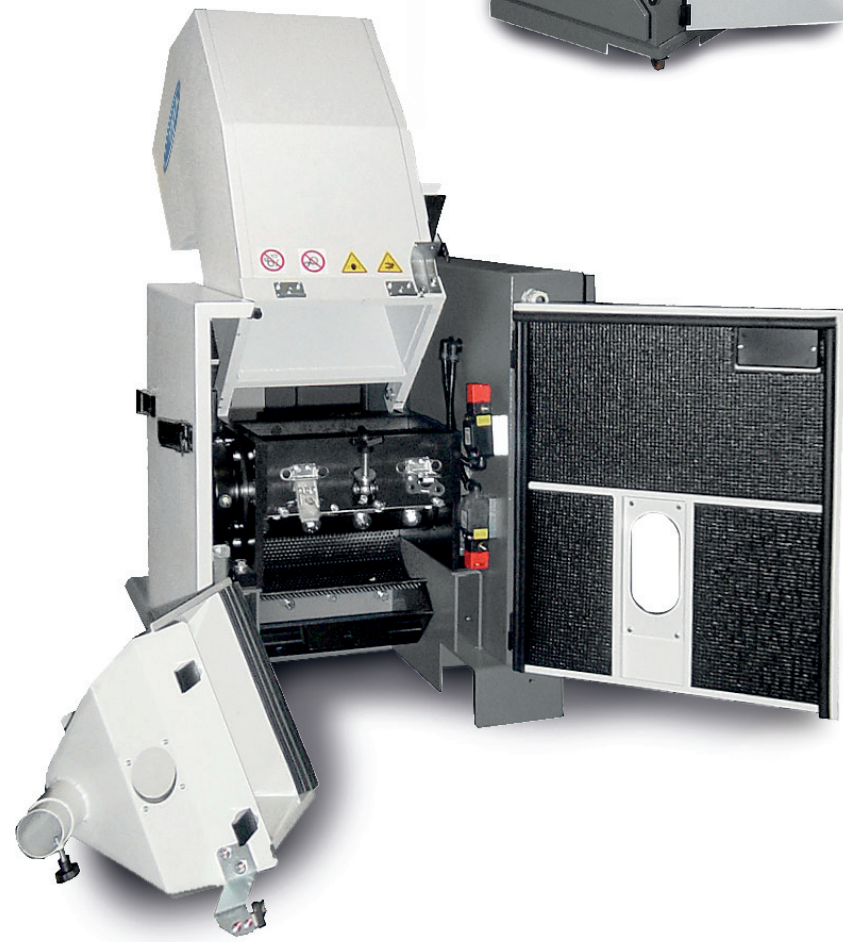


Your recycling needs. Our grinding solutions.

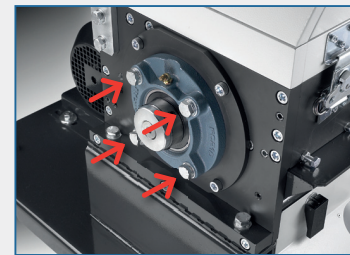
WJ 02

SERIE

Technical moulds, reinforced materials, lack of fine parts, minimum noise level, and uniform regrind material, easy and limited maintenance: since many years the series JM has become the most reliable solution for the in-line recovery with injection moulding machines.



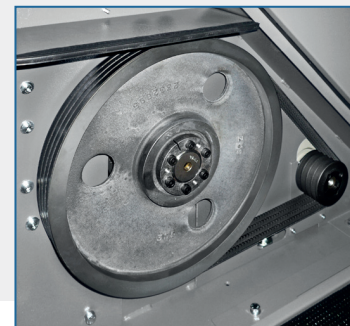
Rotary discs integral with the rotor and containment rings



Roller bearings, mounted to the grinding chamber and fixed to the circumference



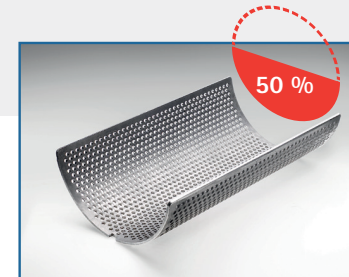
Grinding chamber in anti wear execution



Keys for the fixing of motor pulley and flywheel
Pulley and flywheel manufactured as per drawing due to high inertia



Scissors-cutting configuration



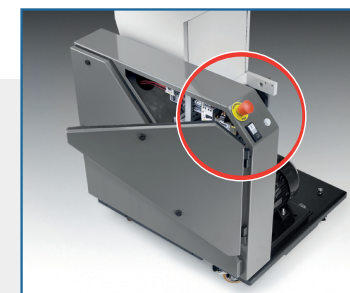
Screen equal to approx. 50% of the knives rotation length



Access without tools to the main maintenance parts



Moving on castors



Integrated electric control panel
Safety devices and circuit in compliance with EEC Directives