

Labotek EHR

External Heat Recovery



External Heat Recovery (EHR)

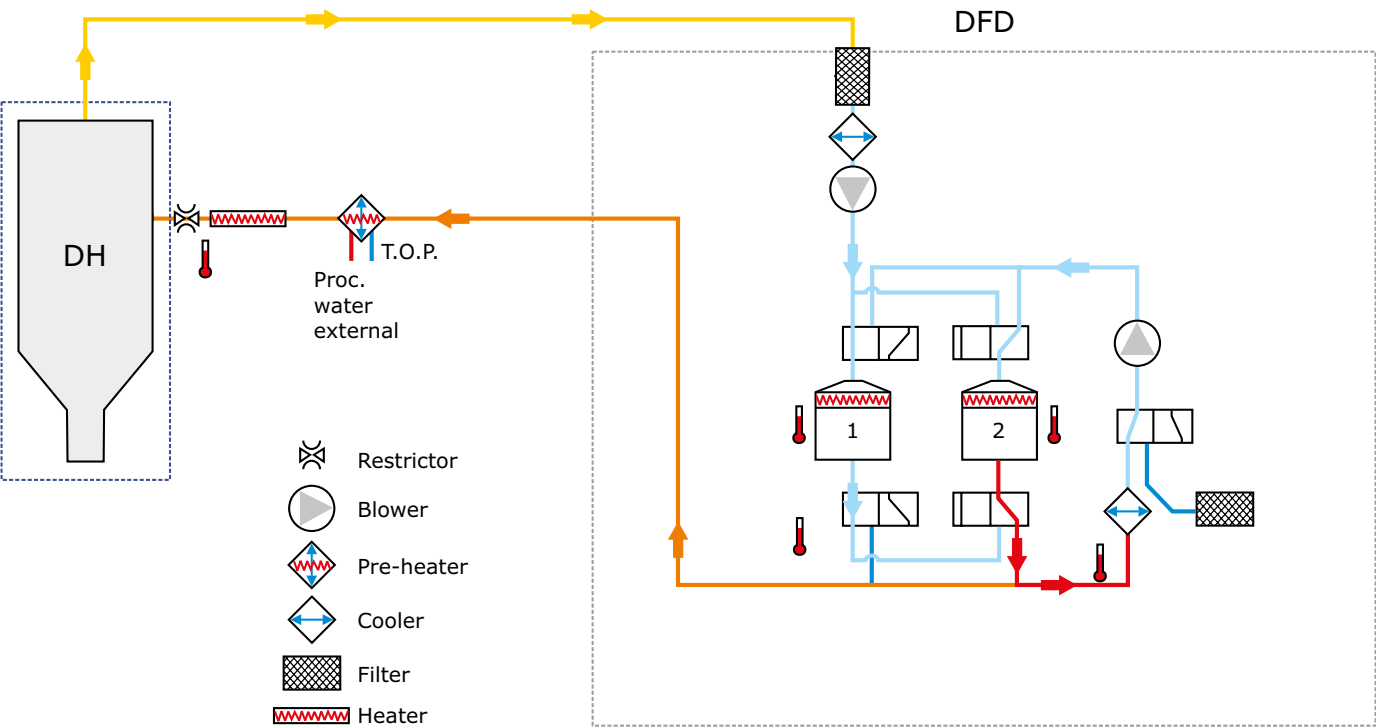
External Heat Recovery (EHR) operates with external hot water, ex from compressor cooling, power utility, or other processes in the plant.

The EHR enables to utilize the hot water and transfer into process air in Labotek drying systems, through highly efficient air/water heat exchange devices.

Energy savings are massive; depending on the temperature/flow of the water available, savings of electrical power up to 85% are achievable.

The software needs to be programmed into a PLC control to enable the EHR option. This can be done via the PLC control of our dryer or with our external Labo-Net PLC control.

Please consult your local Labotek representative for detailed calculation on energy savings and further product information about this unique energy-preserving technology.

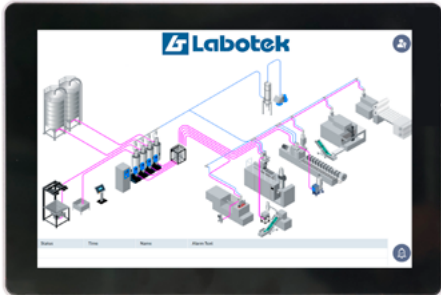


Technical Data

Labotek no.	EHR size	Work area temp. (°C) min./max.	Work area pressure (bar) min./max.	Nominal water pressure (bar)	Flow rate (L/H) min./max.	Water inlet/outlet port size	Controlled via
209946	16.7 kW	-40 / 110	-1 / 16	3 - 5	100 / 750	3/4"	DFD PLC version
209980	45.0 kW	-40 / 110	-1 / 16	3 - 5	100 / 1400	3/4"	DFD PLC version

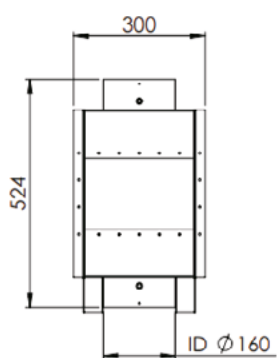
Options

Labotek no.	Description	Voltage
241655	Control EHR stand alone, "Siemens PLC"	230V/50-60Hz

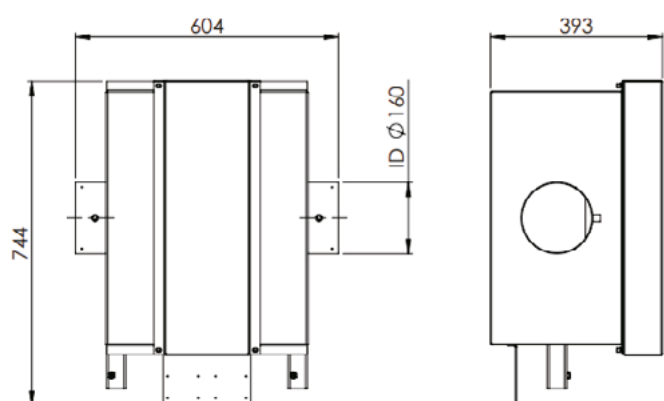




Dimensions



EHR 16.7 kW



EHR 45 kW



Dealers Worldwide



Scan or **Click here** ►
to find a dealer near you.

Labotek A/S

Stroebjergvej 29
DK-3600 Frederikssund

+45 4821 8411
info@labotek.dk

www.labotek.com

