

Labo-Scan 50

Touch Screen Control

for One Wire Materials Handling Systems



Labo-Scan 50

Introduction

The Labo-Scan 50 takes full control of materials handling requirements.

A user-friendly interface via a 7" touch screen enables automatic control of conveying of raw materials up to 50 stations.

The Labo-Scan 50 uses network communication between system components via the well-known, flexible and very reliable AS-Interface & Siemens PROFINET.

The control system is supplied in wall mounted cabinet and enables a great visual appearance of the features. The control is able to handle 4 vacuum stations, using energy-saving frequency control as an option.

The Labo-Scan 50 offers...

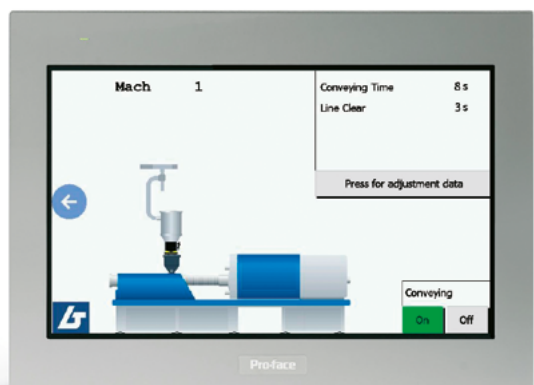
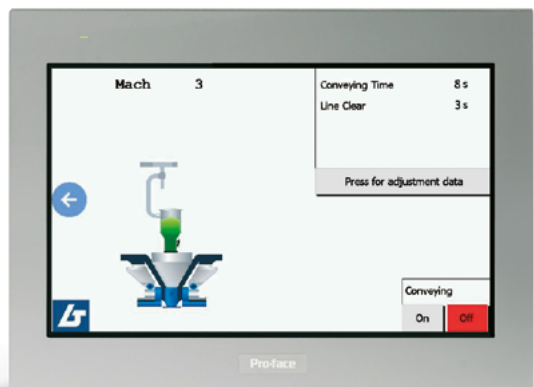
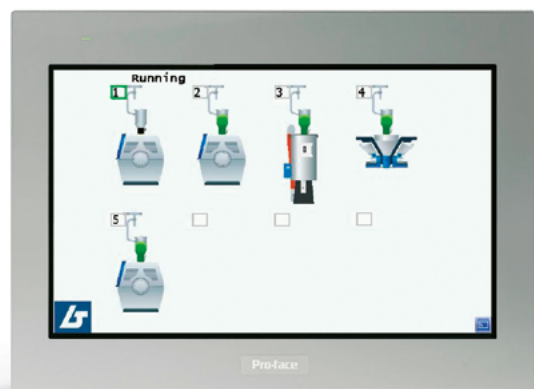
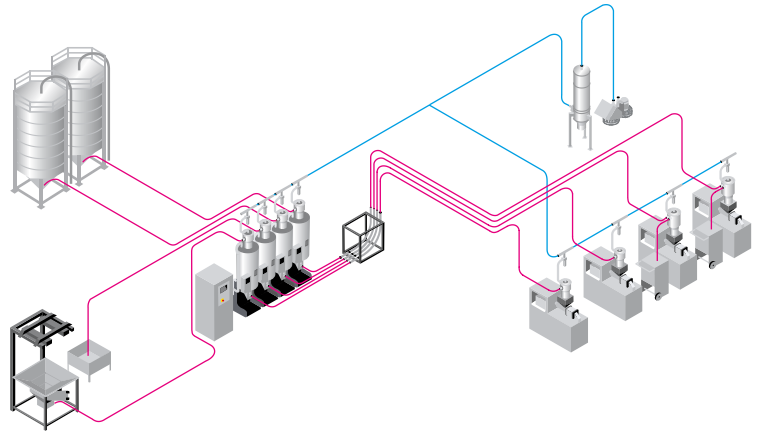
- 7" Touch Screen & PLC from Siemens
- Flexible setup for great visual appearance
- Full control of all parameters for each station
- Ease of use, no need for special training
- Personalized descriptive texts & alarm texts
- Significant energy savings via optional frequency-controlled blower
- Remote access option
- Comprehensive 3-year warranty

Labo-Scan features

The user-friendly interface allows for a graphic appearance as either a production machine, drying hopper or no-show. The result is a visualization that matches the actual appearance, making the operation of the Labo-Scan control extremely easy.

Suction time, line clearing time, suction address and air speed frequency are adjusted directly on the screen, either via keyboard pad or drop-down boxes. The operator can scroll between station selections as required. The Labo-Scan control has built-in control of the suction address, where a pneumatic slide valve under a drying hopper is operated, securing a safe and self-cleaning conveying cycle, leaving no dried material residue after a conveying cycle.

The frequency controller is set in % air speed; here-with each station may have its individual air speed setting, depending on the material being conveyed. Huge energy savings may be obtained through our series of frequency inverters. Raw materials are gently conveyed and hardware piping systems/hoses have increased lifespan.



Technical Data Labo-Scan 50

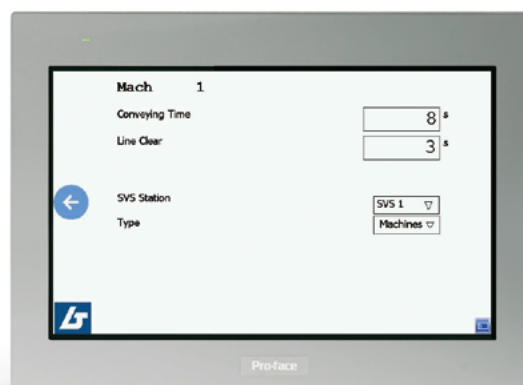
Part no.	Description	No. of stations	No. of vacuum stations	No. of slide valves	Frequency control
101387	Labo-Scan 50	50	4	8	Yes

Dimensions

Description	Dimensions
Labo-Scan 50	L 500 x W 500 x D 250 mm

The vacuum station set-up menu is prepared for several filter-cleaning options, such as dust cyclone, self-purifying filter or Blow Back Valve.

Furthermore, the stand-by frequency may be selected leaving the vacuum station running at e.g. 10 Hz while waiting for the next station to call for material.

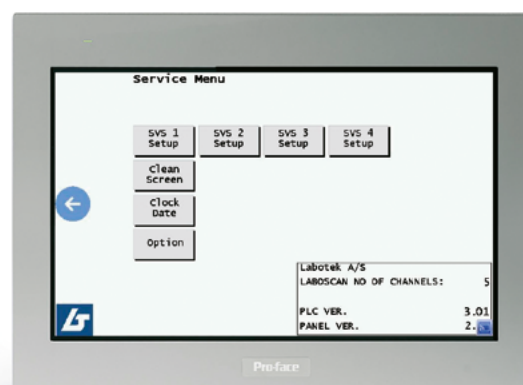
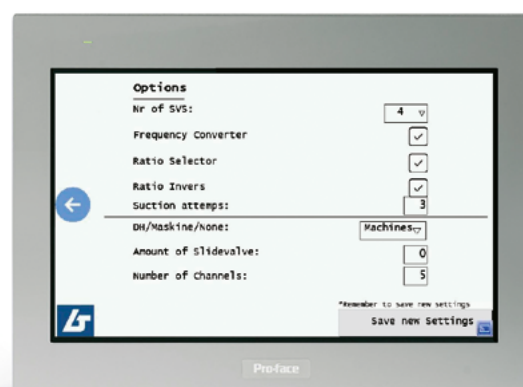


Channel settings

Options

The Labo-Scan controls are prepared for a number of options:

LT no.	Description
280815	LS50, Remote On/Off Box, with status light
204486	AS-i, Connection Box, incl. bracket
207410	AS-i, Extension set
605092	AS-i, Flat cable, black, 1.5 mm ²
605042	AS-i, Flat cable, yellow, 1.5 mm ²
207217	AS-i, Module, Combi, complete
207776	Warning Lamp, with wall bracket, 5 m cable
207772	Warning Lamp, flash orange
287047	AS-i, Mixed Module 4DI/4DO, incl. base
287050	AS-i, Module 4DI/4DO complete SVS
605413	AS-i, Tuner 300 m
670936	AS-i, Cable, 1x16 mm ² copper, for Profi-Net installations
610011	License for Labo-Scan 50 on PC
601555	Siemens, Cable, Net, Green, Profi-Net
241502	Slave panel, LS 50 AS-i
280814	LS 50, control of frequency converters (max. 4)
207898	Valve, By-pass, AC, Ø65, w/ silencer SVS





Dealers Worldwide



Scan or **Click here** ►
to find a dealer near you.

Labotek A/S

Stroebjergvej 29
DK-3600 Frederikssund

+45 4821 8411
info@labotek.dk

www.labotek.com



**3 years
warranty**
excluding wear parts